

Anchor Institutions

Update to Dorset Health & Wellbeing Board

30th March 2022

We'll cover:

- What we've done – initiating an Anchor Institution network for Dorset
- Learning so far
- Where we go next

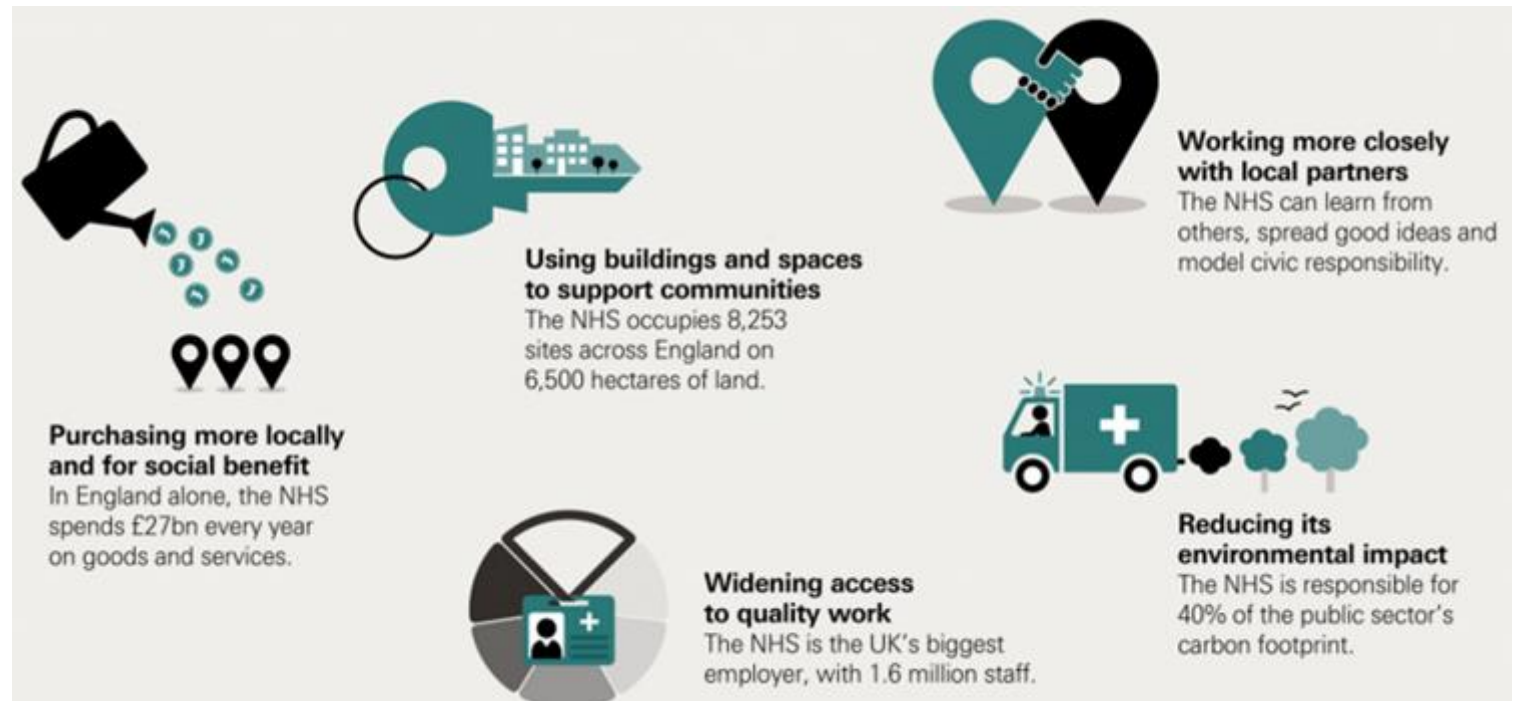
Developing Our Dorset Anchor Institution Network

Where we started:

- Awareness and visibility of anchor institution potential varied across Dorset
- Mixed use of labels and language
- Clear appetite to do more --- but what & how less clear

Socialising ideas & focussing attention

- **Online workshop** with The Health Foundation, Sept 2021
- Socialised the ambition to **go further faster** through developing a Dorset AI Network
- Shared a draft **AI charter**
- 1:1s & network meetings Nov/Dec 2021



What we set out to do:

- Create a space for organisations to support each other develop their impact as Anchor Institutions
- The network aims to:
 - ✓ Convene & support
 - ✓ Share & learn
 - ? Agree and act
- ICS Health Inequalities programme provides resource & facilitation



DORSET & WILTSHIRE
FIRE AND RESCUE



What we heard back:

- Language & shared understanding matters: still working on our narrative
- Don't reinvent the wheel: go where the energy is e.g. Green Plans
- Easy to get lost in the breadth of possibility – focus in on where ambition and energy converges



**CLIMATE & ECOLOGICAL
EMERGENCY STRATEGY**

15 JULY 2021

**Our
Dorset**
Your Local NHS and Councils Working Together

Learning from others: looking in & outwards

- What are Dorset AI's already doing to develop their AI agenda/deliver 'anchor work'
- **Sharing:** Are there pockets of good practise for partners to grow or opportunities for collaboration?
- **Looking outwards:** what are other AI doing, how do we compare and how can we stretch ourselves to do better?



WINTON COMMUNITY
SHED

Widening access to quality work: what we're already doing

- **Providing access to employment for care leavers:** e.g. Dorset Council's Pathways to employment for care leavers scheme (apprenticeships, traineeships, work experience)
- **Providing routes into employment for young people:** e.g. Dorset County Hospital 46 kickstart placements (90% of first cohort went on to substantive roles)
- **Supporting staff wellbeing and retaining workforce:** e.g. Our Dorset ['Here for Each Other' wellbeing service](#)
- **Providing inclusive employment for marginalised groups of people:** e.g. University Hospitals Dorset (UHD) is [a Disability Confident employer](#) and committed to the [Armed Forces covenant](#)

Purchasing more locally & for social benefit

- **Embedding social value requirements in procurement frameworks:** NHS organisations will be applying a minimum 10% weighting to social value in procurement in line with government procurement policy (procurement policy note [06/20](#))
- **Embedding social value requirements in procurement frameworks:** Dorset Council is adopting 5% social value weighting in their procurement evaluation framework and monitors quarterly spend within Dorset Council area.
- **Understanding and supporting local procurement:**
 - Dorset County Hospital: Is in the process of identifying and tracking the Trust's spend with local suppliers.
 - Dorset Council: 51% of suppliers based within Dorset, Launched 'Doing Business with Dorset Council' webpages.

Using buildings & spaces to support communities & the environment

- **Promoting the benefits of engagement with greenspace:** e.g. Bournemouth University is promoting and working to increase biodiversity and peoples' connection with nature as a means of supporting health & wellbeing.
- **Using our buildings differently:** e.g. Dorset health village/South Walks House is an example of a whole system effort where multiple organisations came together to deliver a shared purpose (increased access to diagnostics) with potential social value attached e.g. high-street footfall and benefit for local business
- **Repurposing resources for community use:** e.g. University Hospitals Dorset collaborating with Bournemouth Parks Foundation to supply unneeded materials to Winton Men's Shed Project
- **Providing local employment through estate development:** Dorset County Hospital ensures major capital infrastructure investments deliver measurable social value including use of local sub-contractors/suppliers where applicable.